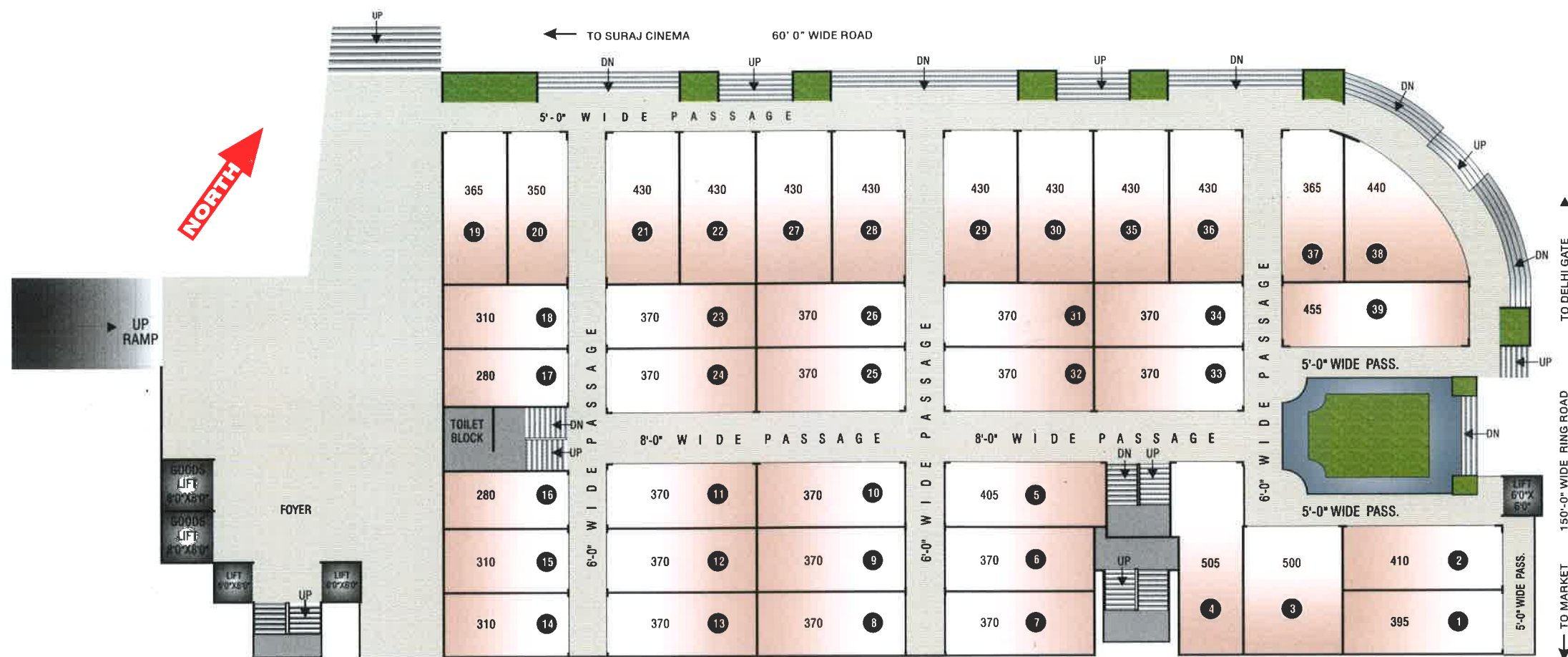
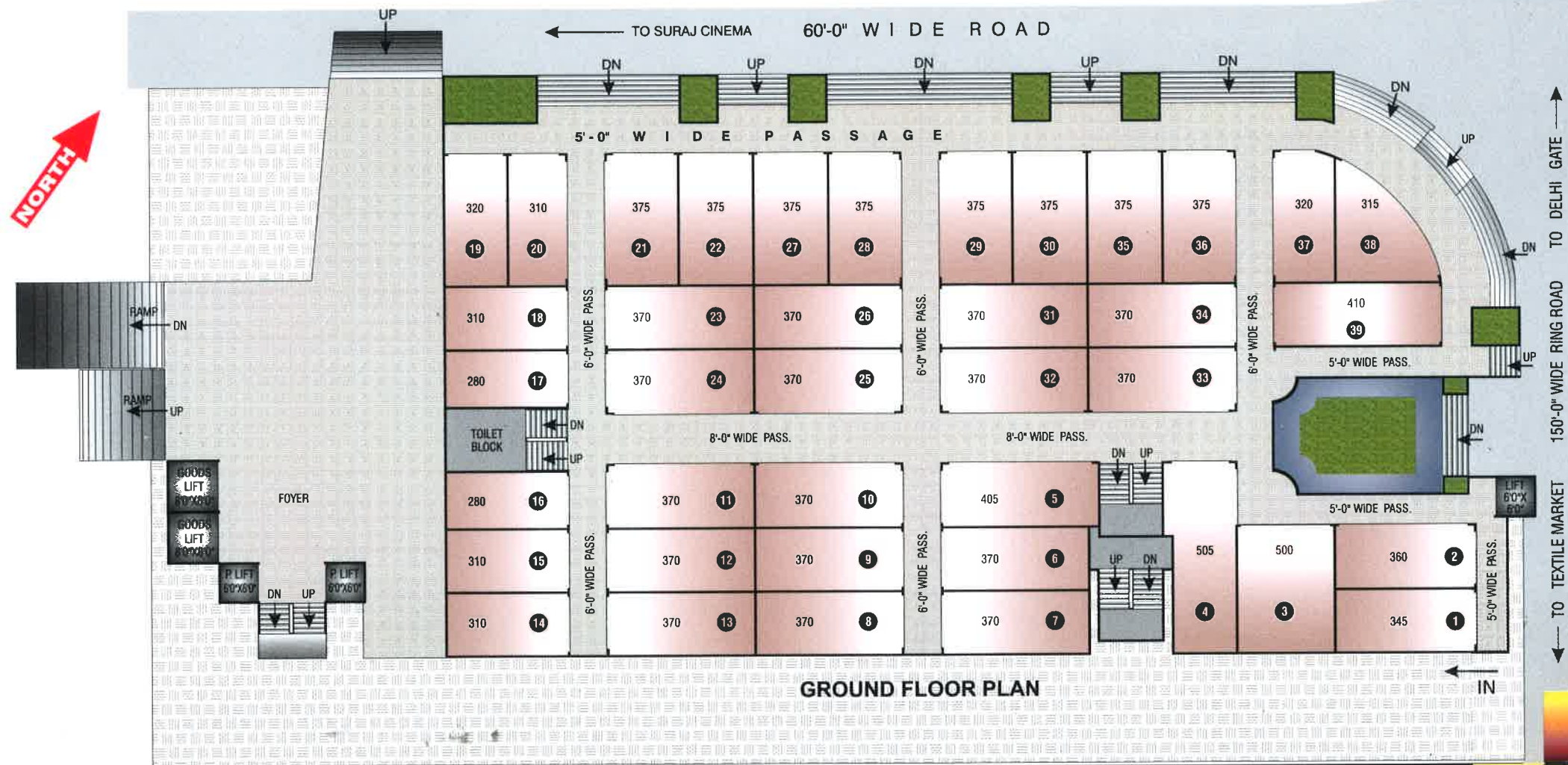


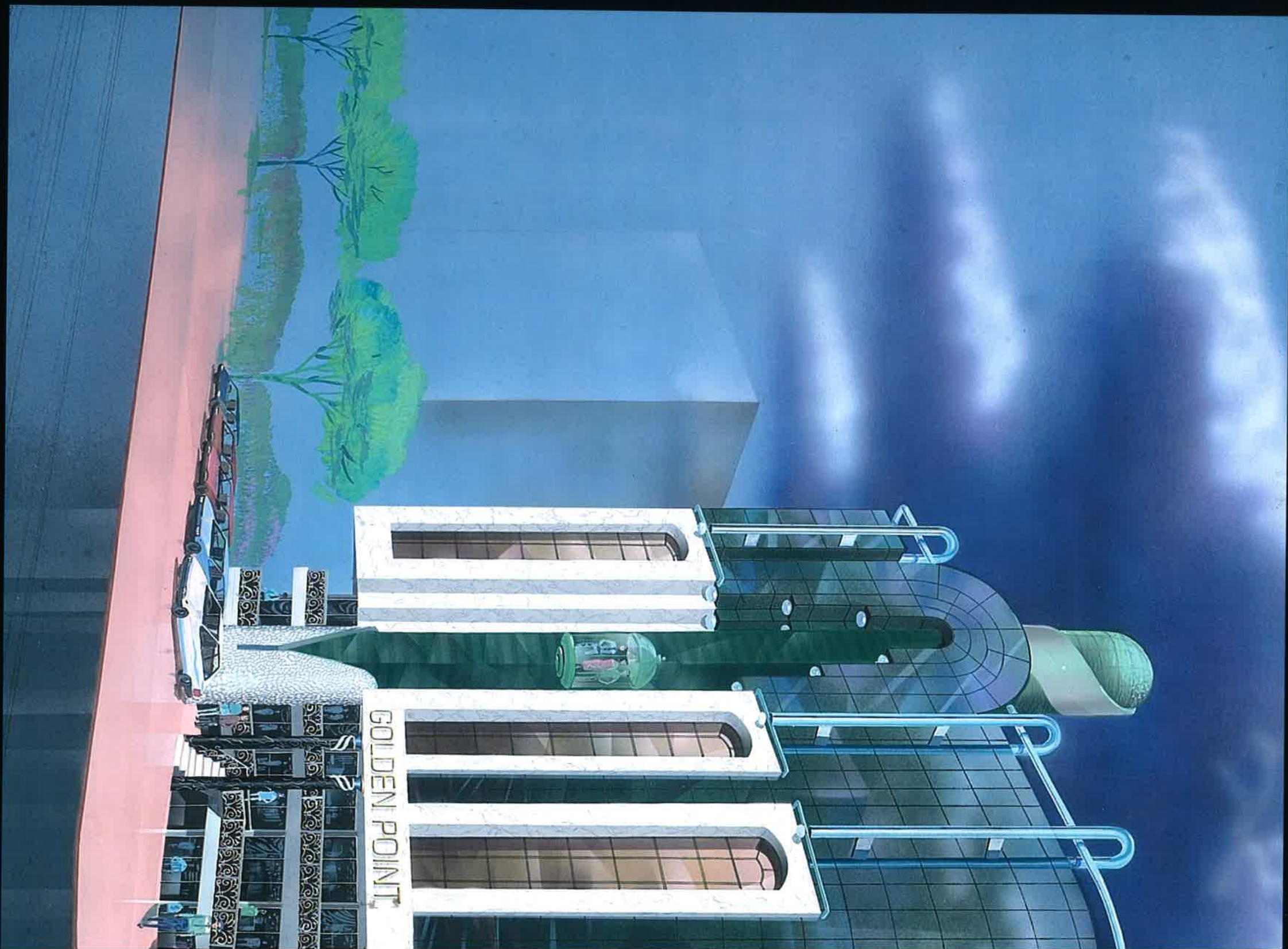


Ph: 4743
Surat

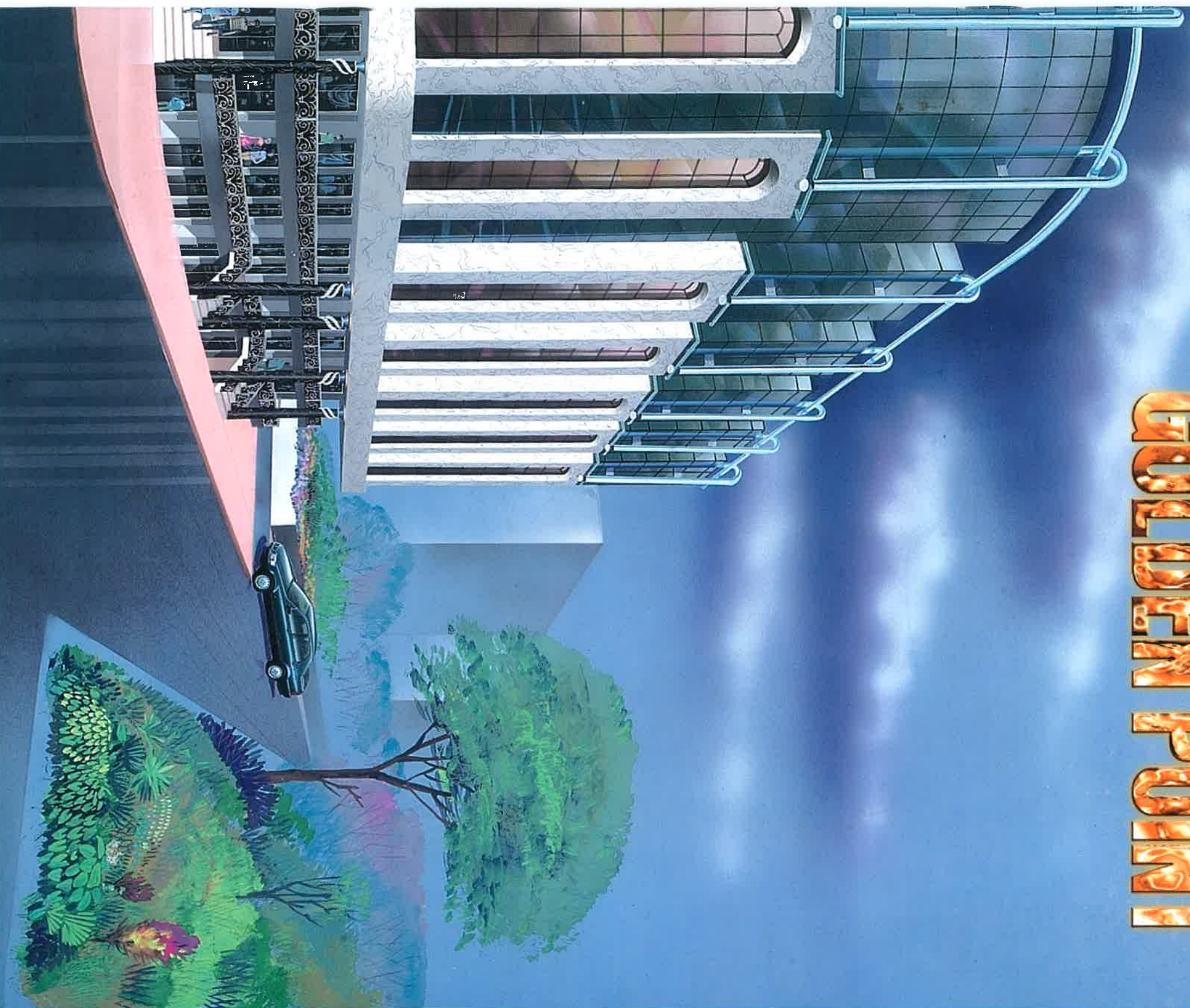


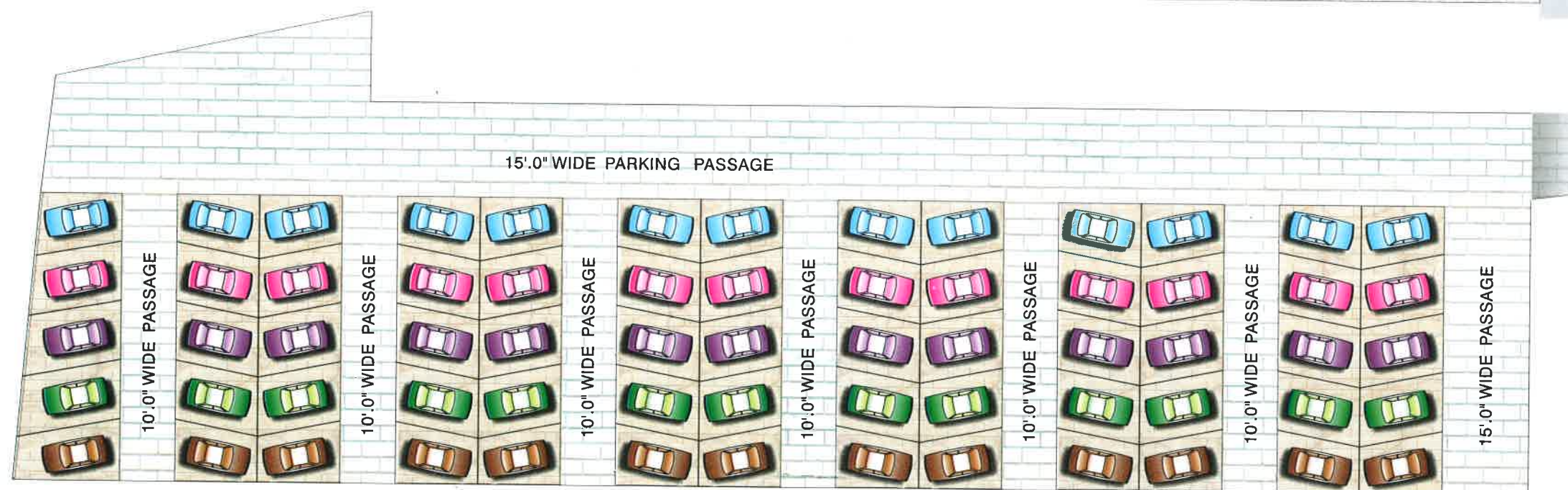
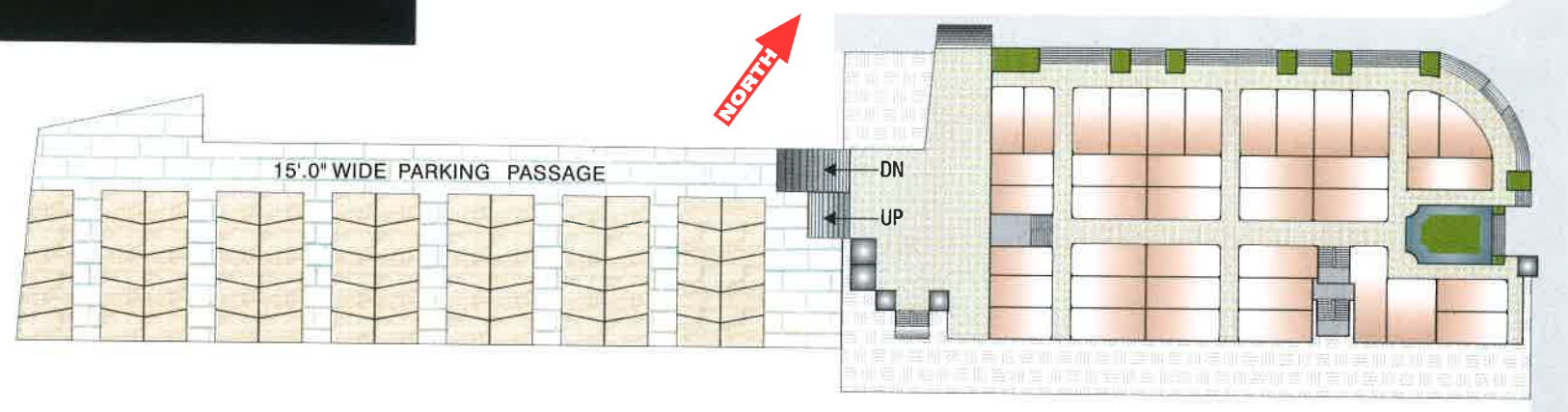
LOWER GROUND FLOOR PLAN



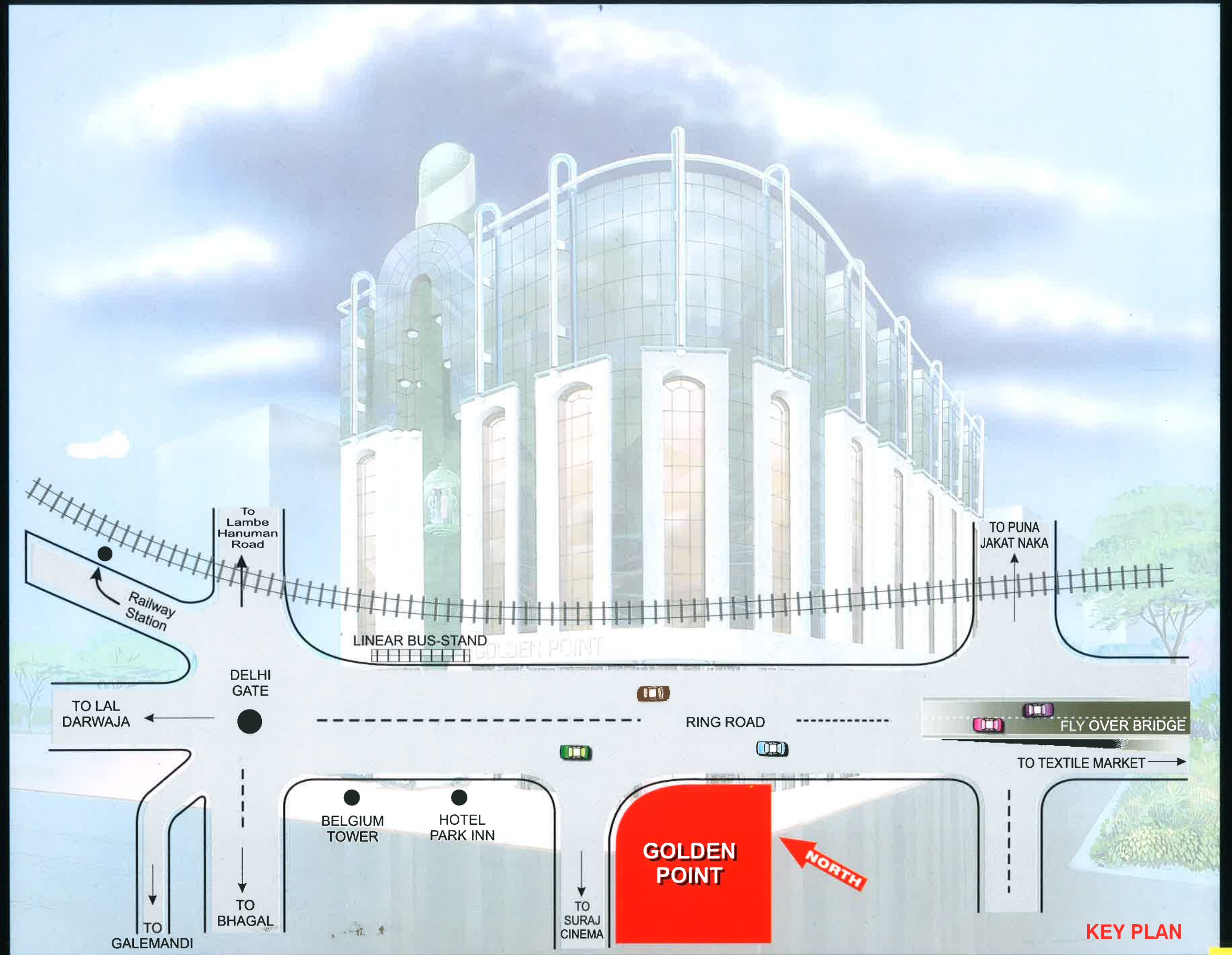


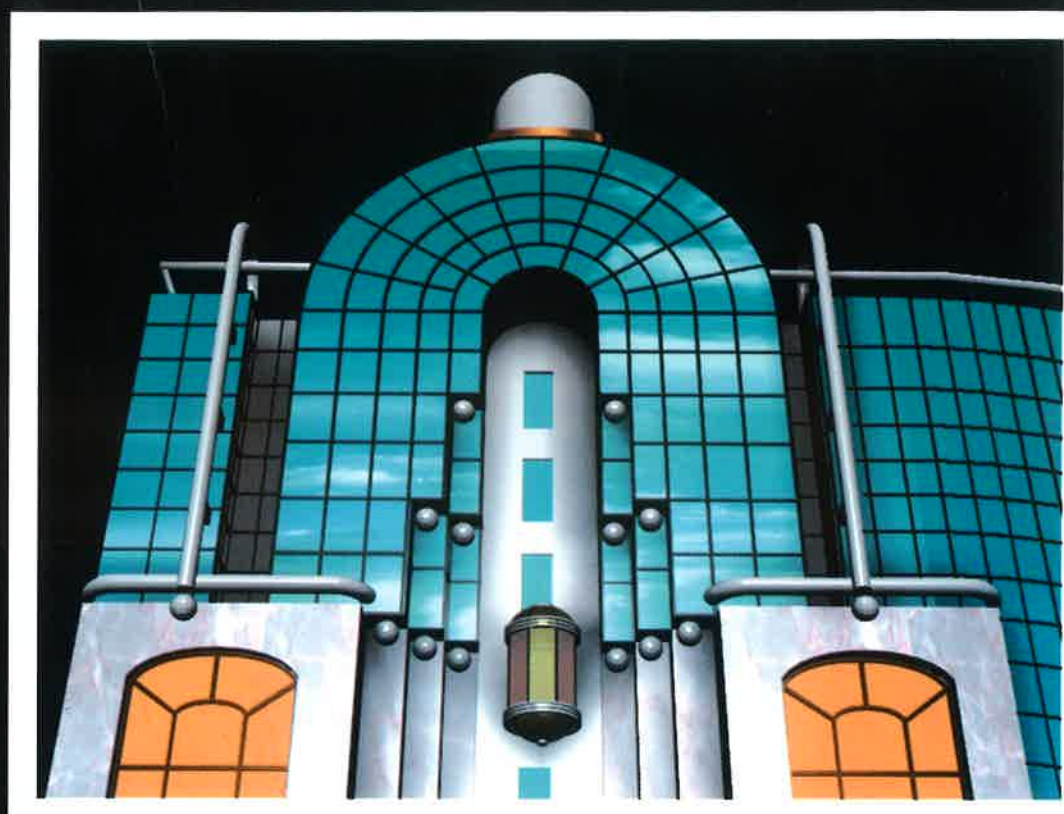
GOLDEN POINT





PARKING PLAN





DEVELOPERS

Sweta Organizers Pvt. Ltd.
Sawani Group
Vakharia Compound
Ring Road, Surat.
Ph.: 425089, 427353

ARCHITECT

Aayojan
Ar. Haresh Mahadevwala
Surat.
Ph.: 477800, 477900

STRUCTURAL ENGINEER

Er. Jalil Sheikh
Surat.
Ph.: 472288, 472299

LEGAL ADVISER

Vasudev Goplani
Surat.
Ph.: 474501, 474502

AMENITIES

- (1) Good qualities Ceramic tiles 12" X 12" size flooring in shopping and offices.
- (2) Marble flooring in passage.
- (3) Rolling shutters in Shops and wooden frame doors in Offices.
- (4) Concealed copper wiring as per architect design. Telephone, T.V. point and A.C. points in all shops and offices.
- (5) Attractive elevation with decorative glass lift in front, 2

- (6) Generator for lift, water pump, common passages light and 4 point in each offices and shops.
- (7) Common parking ground level and basement level with chequered tiles.
- (8) Separate entrance for offices.
- (9) Cement paint on external sand face plaster and internal white wash.
- (10) 24 hours water supply with underground and overhead watertanks.

- (11) Attached toilet in each office & Water proofing treatment for toilets and terrace.
- (12) Intercom in each office & shop with 2 P&T Telephone line at Reception.

Note:

Developers reserve the right to modify features and specifications as may be required.